



LIFE



AESTHETICS



RIGOROUS



RESEARCH



User Manual

With Tuya Smart



1. Product Introduction.....	02
2. Functions	
Download Tuya Smart App.....	05
Add Lock.....	06
Dynamic Passcode.....	07
Add Unlock Modes.....	08
Add Member.....	09
Passage Mode.....	11
Secure Lock Mode.....	12
Initialization by App.....	13
Initialization by Handle and Secure Lock Button.....	14

Product Introduction

This smart lock is a new type of intelligent door lock . It has 4 core patents and can be used in most languages worldwide. Currently, Tuya Smart App can be downloaded and applied in 159 countries and regions. Advanced electronic and biometric technology enables the smart lock to have intelligent recognition capabilities, making users' work and life easier and more convenient.

This smart lock can be used for private homes, commercial offices, residential buildings and more.

Please read this manual carefully before using this product.



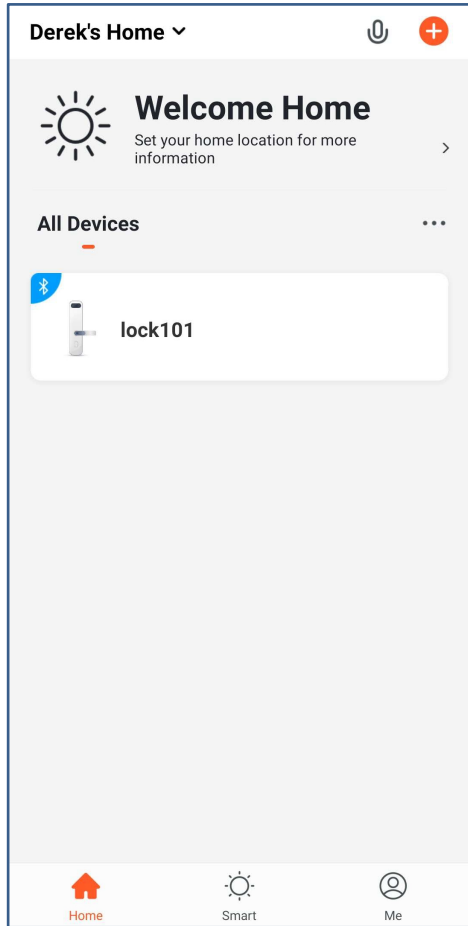
Product Introduction

Unlock Modes	Fingerprint	Total 100 PCS
	Passcode	
	IC Card	
	Mechanical Keys	
	Tuya Smart App	
Power Supply	4 AAA batteries	
Scramble Code	15 digits total	
Work Temperature	-20~65°C	
Work Voltage	4.8V-6.2V	
Fingerprint type	Semiconductor Embedded Fingerprint	
Door Thickness	35mm-65mm	

Product Introduction

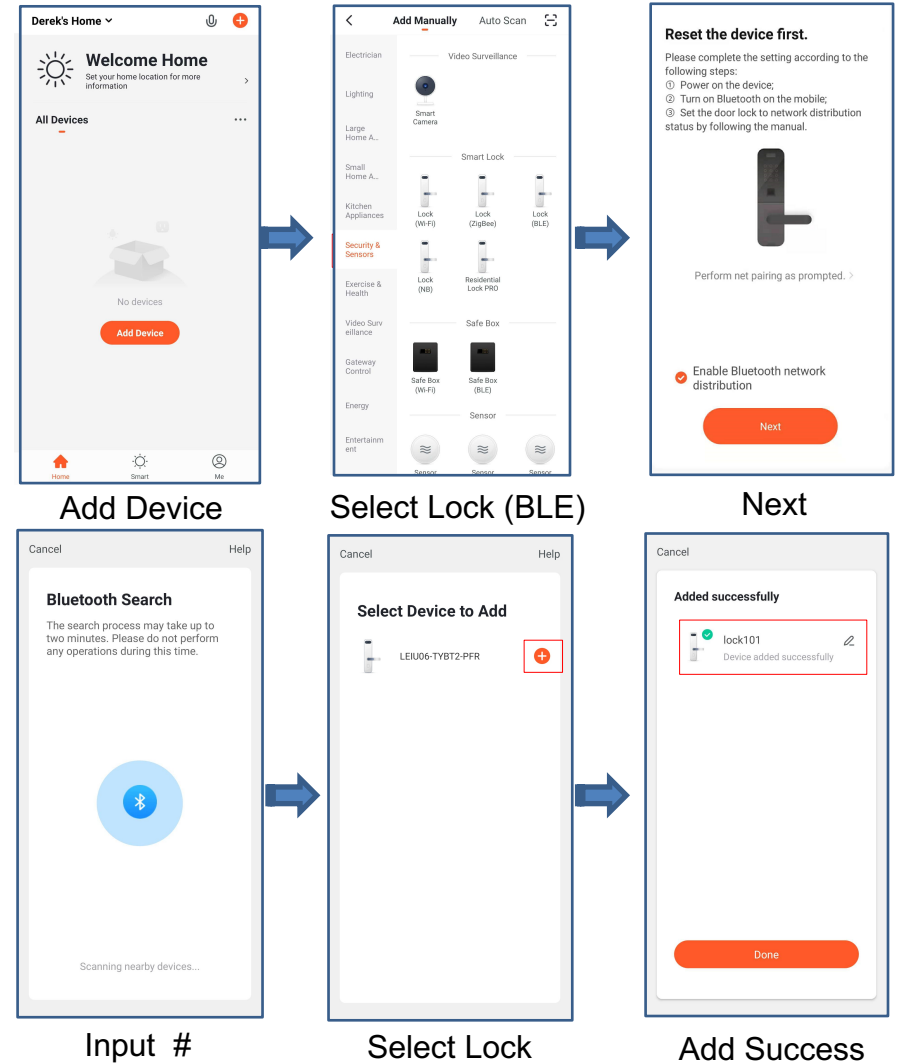
Safety Assistant Function		
1	Passage Mode	when you need to open/close the doors frequently
2	Low battery alarm	when the voltage is lower than 4.8V, the alarm is activated each time with the unlock, and the lock could be unlock 200 times after first alarm
3	Scramble code function	It supports front and back dummy passcodes to prevent from peaking
4	Access records query	You can check access records at anytime
5	USB emergency interface	you can charge the lock to unlock the door when the battery run out.

Download Tuya Smart App

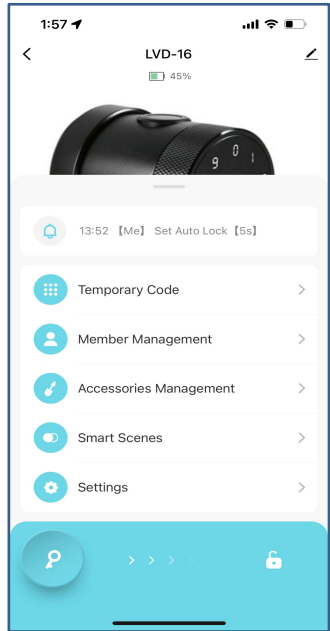


Tuya Smart (iOS version) can be downloaded from the app store, and the Android version can be downloaded from the application store of Google play, Aptoide and so on

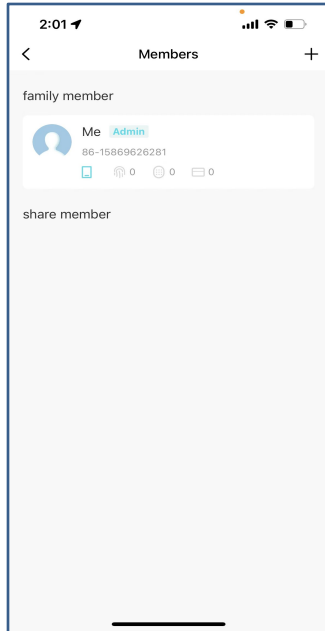
Add Lock



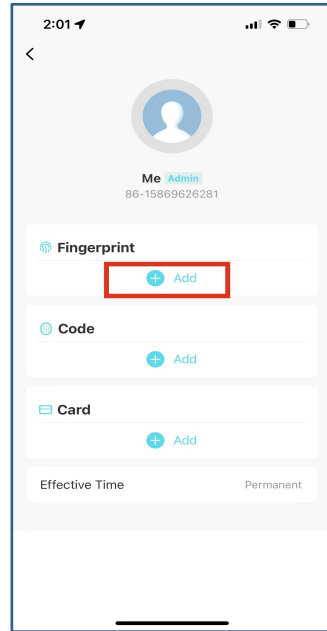
Add Fingerprint



A



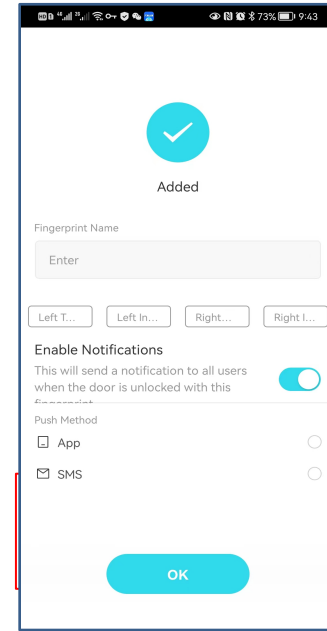
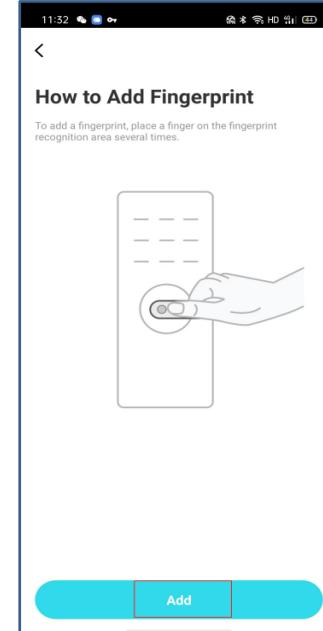
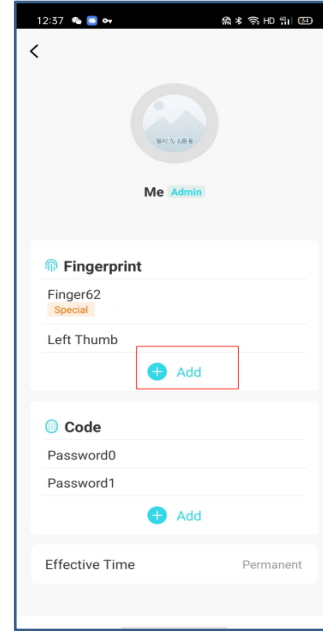
B



C

Click “Member Management”, select Member, and then click “Add”.

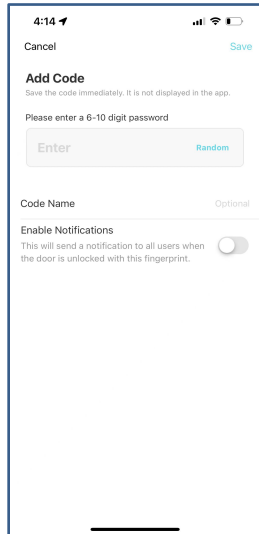
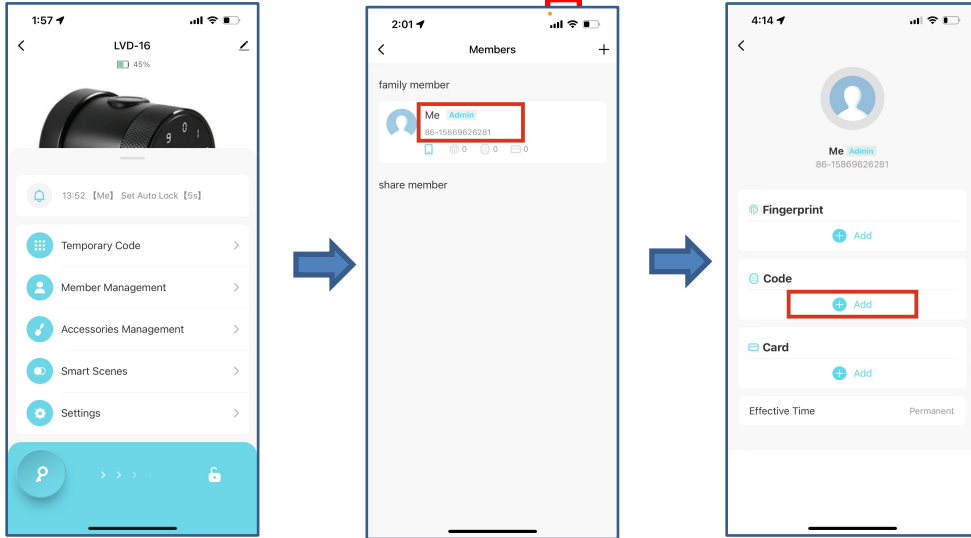
Add Fingerprint



Place finger on the recognition area 5 times following the voice prompts.

Note: Every time place finger, fine adjust the position of finger to ensure that fingerprint is fully recorded.

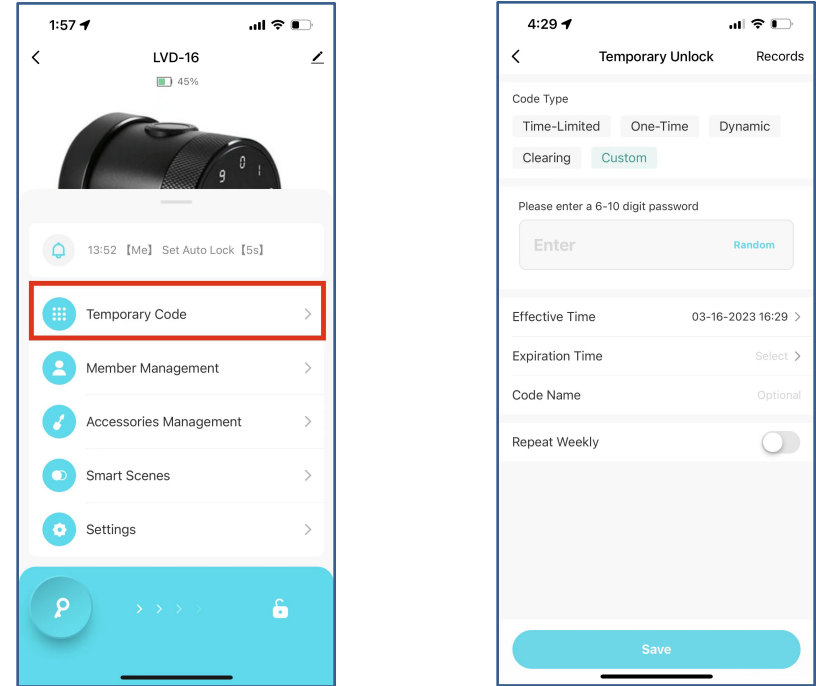
Add Permanent Passcode



Click “Member Management”, select Member, and then click “Add”.

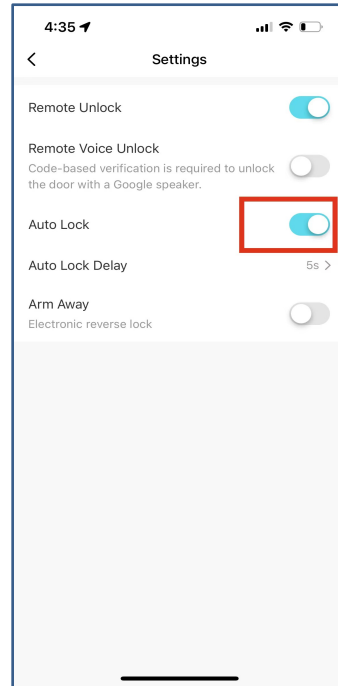
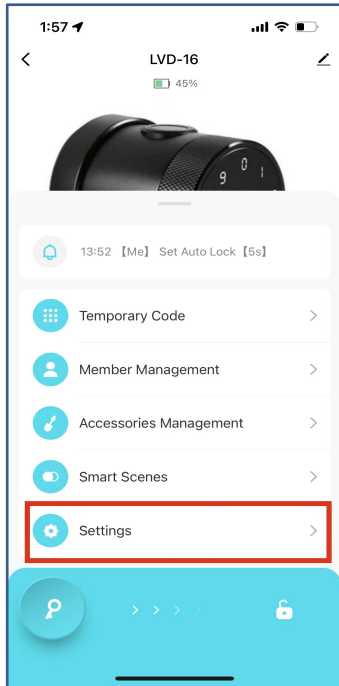
Note: For newly added locks, it is recommended to add an “Admin” passcode first.

Add Temporary Passcode



Select “Temporary Code”, and 4 types of passcodes for your choice, “Time Limited”, “One-time”, “Dynamic” and “Custom”

Passage Mode

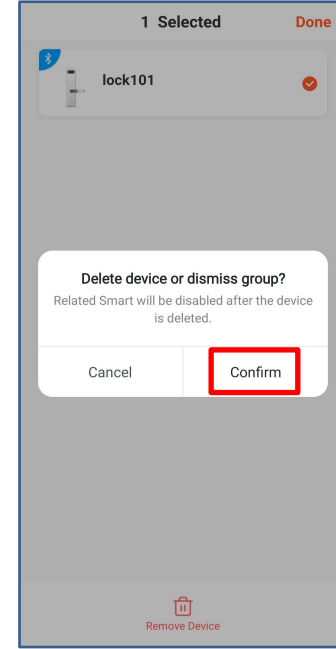


Close “Auto Lock”, and unlock the lock once, Passage Mode is on.

Open “Auto Lock” and unlock the lock once, Passage Mode is off.

Note: After Passage Mode is on, anyone can unlock the lock without any permission.

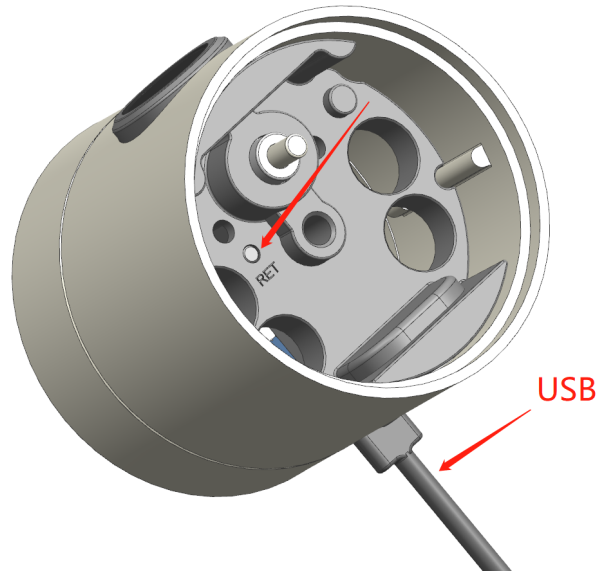
Reset Lock with App



Click “Remove Device”, and click “Confirm” to delete and reset the lock from App.

Note: If the lock is offline, you need to slide your finger on the main interface to make the lock online.

Reset Lock with Reset Hole



1. Take the front handle down, then disassemble it and charge the lock by USB interface; as show in the picture.

2. Press the RET reset hole lightly for 4 seconds with a small object (such as a ballpoint pen), as shown by the red arrow in the picture. We will hear beep sound every second. Release it when the sound of beeps stops. The system will automatically restore the factory Settings within 5 seconds, and the voice message will indicate that the factory Settings have been restored successfully.

